



Russell Nursery Gardening News

Celebrating 21 years in business

March 2014



Open daily
9:00am-5:00pm

Quick Links
[Nursery Website](#)
[Our Plants](#)
[Resources](#)
[Hall's Greenhouses](#)



Nursery News

First of all a warm welcome to our newest staff members, Olivia Bitove, Angie Neal and Steve Catto - all recent graduates from the [Pacific Horticulture College](#). We are very pleased to have three such great additions to our crew and look forward to working with them for a long time to come!

Website Update: If you haven't been to our [website](#) lately, please have a look. It has a clean new design that works on screens of all sizes. The indexed [plant lists](#) make it easier to find things and the new [Resources](#) section contains past articles and information on a wide range of plant related subjects as well as links to local garden clubs and other sites of horticultural interest.

New & Improved: The newly renovated area for shade loving perennials is almost complete and to celebrate the new space, we are bringing in a new line of perennials from **Harkaway Botanicals** in New Westminster. Lyle Courtice, the proprietor, is a speciality grower and his coveted collection of rarely seen plants will have us all reaching for our 'A-Zs' looking for information!

Roses: Bare root roses are for sale for the next few weeks. Please see the [Rose Catalogue](#) for details. We expect that the potted roses will be ready in early June this year.



Pre-Bonsai Seedlings: Every year we look for young plants that will be of interest to local bonsai enthusiasts. They will be in soon and the catalogue will be posted on our website. There will also be a collection of potted young trees that have had an extra year's growth. Please send us an [email](#) if you would like to be notified when they are ready for sale.

Feature Tree

If you are looking for a very special little feature tree, look no further. *Prunus incisa* 'Little Twist' has all the characteristics of a perfect little gem. As if its ultimate height and spread of 10 - 12 ft. and masses of small white blooms weren't enough, it also boasts rich dark green foliage, red fall colour, interesting winter texture AND resistance to the usual problems that attack most cherries!

Available in both tree and shrub form. Suitable for containers, patios, small garden spaces.



Plant Design & Consultation Service

Need some help? Just ask! We can help with planting plans for new beds and/or advise on existing garden beds in need of renovation..

[For Information](#)



Russell Nursery is the authorized BC distributor for Hall's Greenhouses. For information, and to find a dealer near you, go to:

HallsGreenhousesBC.com

Join our mailing list

Fruits and Vegetables: In stock: seed potatoes, onion sets, rhubarb, asparagus, figs, blueberries, red and black currants, haskaps, red and green gooseberries, raspberries, saskatoons. Also: lettuce starts, cabbage (including 'Gonzales' a new variety with mini-heads), lacinato & redbor kale, peas and spinach.

Spring Classes

Classes are free but space is limited.

Please reserve by [email](#) or call 250-656-0384

NATIVE BEES

with Greg Cook Saturday, March 22nd at 10:00

There is lots of buzz about mason bees at this time of year, but did you know that there are at least 10 species of bumblebees native to Vancouver Island? Not only that, but there are many other types of native bees around that enhance our gardens and environment. Greg has a keen interest in bees of all kinds and will talk about how to both attract them to your garden and encourage them to stay.

SUCCESS WITH SEEDS

with Faye Ford and Laurel Rassenti Sunday, March 23rd at 10:00

Do you suffer from spindly seedling syndrome? Are they long and leggy with damping off often their fate? If this sounds like something you have experienced, join Faye and Laurel, our two seeding enthusiasts who will share their secrets for growing stocky, healthy starts.

DEER RESISTANT GARDENS

with Ingrid Wood Saturday, March 29th at 10:00

If you are thinking of giving up on your garden because of the deer, don't despair. Ingrid may be able to help. She has years of experience and more than a few tricks up her sleeve for minimizing the impact of deer on the garden.

BONSAI WORKSHOP

Saturday, April 12th 10:00 a.m.

Enjoy this rare opportunity to work alongside members of the *Vancouver Island Bonsai Society* in this hands-on workshop. Club members will be working on their own specimens as they guide you through the process of creating a bonsai. Whether you need help getting started or have questions about what's next, this workshop will be fun and informative. If you have your own plants to work on by all means bring them along.

Class size is limited, and pre-registration is required.



The Language of Seeds *by Laurel Rassenti*

It's always easier to understand something when you know the language. If you have been wondering about the difference between open pollinated, F1 Hybrid and what organic actually means, read on...



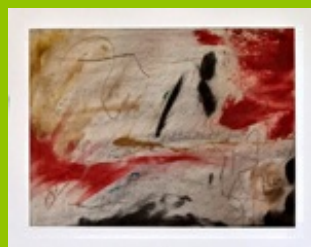
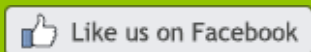
Open Pollinated: Plants produced by crossing two parents of the same variety. The resulting offspring will have the same characteristics as the parents. Choose OP varieties if you want to save your own seeds.

(F1) Hybrid: Plants produced by crossing two parents of different varieties. Traditionally, hybrids are the result of many years of patient hand pollination, observation and trialing. Hybrid seeds

often produce plants with superior "hybrid vigour", however, these plants will not produce seeds of reliable quality and therefore should not be used for seed saving.

to receive timely updates and news on:

- *New arrivals
- * Maintenance & pruning reminders
- *Class schedules
- *Notice of our fall sale



Fallen Tree Art Studio
(at Russell Nursery)

Open by Appointment
& by Chance

~ Abstract and
mixed media images ~

Featuring work by:
Michele Cullen Russell
and **Alison Sproule**

* * * *



It's important to note that just because a plant or seed is a hybrid **does not** mean that it's been genetically engineered.

Organic: Seeds harvested from plants that were grown without synthetic fertilizers or pesticides.

Heirloom: An open pollinated plant variety that's been grown for at least fifty years.

Untreated Seed: Seed that has not been coated with fungicide or pesticide.

Days To Maturity: May be either from germination or from transplant; check packet instructions carefully.

Parthenocarpic: Plant varieties that are able to set fruit without pollination; especially valuable for greenhouse production where there are fewer insects than outdoors.

Gynoecious: Plant varieties that have all female flowers, thus producing more fruit per plant.

Vernalization: A plant flowering and setting seed as a result of a cold period. Some vegetables will "bolt" if subjected to a sudden cold spell in spring.

Winter Gardening: Plants that are grown in spring and summer for winter harvest. These crops should be more or less full-sized by Hallowe'en as growth rates decrease significantly after that.

Overwintering: Overwintered crops are started in summer and will finish growing the following spring. Some, such as purple sprouting broccoli, require this cold period to set buds. Others, such as hardy varieties of lettuce, will put on sudden growth when the weather starts to warm, resulting in an earlier harvest than if planted in spring.

For the Love of Flowers, Start a Cutting Garden

by Faye Ford



Most of us want to bring the beauty and fragrance of flowers into our homes, but worry about plundering the garden beds by cutting off blooms. The solution? Plant a cutting garden! It needn't be large but, if well planned, will reward you with glorious bouquets all season long. A few guidelines and suggestions to help you get started.

LOCATION: Site your cutting bed away from your main garden beds; it can be tucked behind the shed, against the garage, or even in the vegetable garden. It should be in a sunny spot, out of the wind, with good drainage and fertile soil amended with **lots** of compost, leaves, and slow-release fertilizer. If you haven't gardened in this spot before, dig down deeply and add the amendments to the root zone.

DESIGN: Plant in rows or blocks, with the taller plants on the northernmost side so as not to shade the shorter plants. Some plants that require staking, like dahlias or delphiniums, are easier to stake when planted in well-spaced rows, and because this isn't an ornamental bed, utilitarian staking isn't a problem.

WHAT TO PLANT: There are only 3 main guidelines for this, and they are simple; *grow what you love to have inside the house or give to friends* grow plants that produce attractive foliage or many flowers over a long period, and generally look for plants with long flower stems. Pansies are sweet and they bloom early, but their short stems give them limited use for arrangements.

Both annuals and perennials have a place in a cutting garden. Perennials will bloom over a shorter period, but they are reliable and will be there again next year. Annuals will keep on flowering until their season ends; keep the flowers cut, or deadhead any fading blooms to frustrate the plant's need to create a seed, thereby forcing it to bloom again.

There are so many choices for excellent cutting flowers, but these plants get my vote for ease of care and reliable bloom over a long time: [READ MORE](#)



Russell Nursery 1370 Wain Rd, North Saanich, BC V8L 5V1 250-656-0384

russellnursery@telus.net russellnursery.com