



## Russell Nursery Gardening News

Celebrating 21 years in business

November 2013



**Open daily**  
**9:00am - 4:30pm**

**Last day this year:**  
**Sun. December 22nd.**

**Re-opening:**  
**Sat. February 01, 2014**

**We'll be checking email**  
**and phone messages**  
**during the time we're**  
**closed.**

**Quick Links**  
[Nursery Website](#)  
[Greenhouses](#)  
[Nursery Notes](#)  
[More About Us](#)



**Season's Greetings!** It's a busy time around the nursery. We are doing lots of cleanup and winterizing, planning for next year plus getting ready for a festive December. All the nursery elves are busy creating a **unique collection of wreaths, door swags, table arrangements and more** using a wide array of fresh cut greenery. We do take special orders, so if you have something in mind come and talk to us. In stock are wire wreath forms, paddle wire, moss and more for DIY.

It's one of our traditions to have a pot of hot spiced cider on the go and we'll have plenty of it on hand for all our classes and for anyone who comes by for a tree or just a visit. If you'd like to make some at home, you'll find the recipe in the side bar at the bottom of the page.

It's also a tradition for many of you to visit us in December and we look forward to seeing you. Thank you all for your continued interest and support. From all of us to all of you - **Happy Holidays!**



### **Hoping for Holly and Cedar**

**and...** We need a LOT of greenery, especially holly, cedar and fir for classes and other projects. ***If you are having hedges or shrubs pruned we'll take the clippings off your hands.*** If it's convenient, please drop off cut branches at the nursery anytime during business hours. If it's not, or there's a lot of material ***please call 250-656-0384*** and we'll come and get it. Also needed are branches with variegated foliage, berries or coloured stems.

**Christmas Trees** Our freshly cut, Island grown trees will be here by November 29th. On order are Douglas Fir, Grand Fir and Noble Fir, and a few Scotch Pines, in a good range of sizes and prices. There will also be a nice selection of container grown live trees.

### Plant Design Service

Winter is for dreaming and planning and pondering the possibilities. If you aren't sure how to get started, we can help! Come spring, call us come in or send us an email.

#### For Information



Russell Nursery is the authorized dealer for Hall's Greenhouses in BC. If there is a greenhouse on your wish list check out

[HallsGreenhousesBC.com](http://HallsGreenhousesBC.com)

### RN Hot Spiced Cider

A flexible recipe that can be made for as few or as many servings as needed!

Mix together in a suitably sized pot:

3 parts apple juice to 1 part cranberry juice

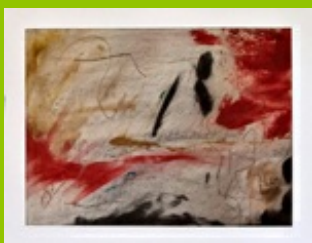
A couple of cinnamon sticks  
A few cloves and allspice berries wrapped in cheesecloth

Bring to a soft boil, turn down the heat and simmer for a couple of hours.

Serve warm with ginger snaps.

Enjoy!

\* \* \* \*



Christmas tree day. All hands on deck!



Trees of all sizes!

### Classes

**Wreaths:** Learn how to create a one-of-a-kind wreath from a wide array of festive greens and decorative berries. **The cost is \$35.00 + GST** and includes all materials. Classes last about 1 ½ hours. **Bring your pruners, your gloves and your imagination!**

Call 250-656-0384 to reserve your spot. **Phoning is better than emailing!!** Classes are filling quickly, but there is still room on these dates:

- Wednesday, December 4th 10 a.m.
- Friday, December 6th 10 a.m.
- Saturday, December 7th 10 a.m.
- Monday, December 9th 10 a.m.
- Saturday, December 14th 10 a.m.



**Centrepieces:** Create a lovely, long-lasting natural table arrangement for a hall or coffee table, dining room, or as a very welcome gift.

**Cost is \$35 + GST.** Includes a container, Oasis, candle, greens and decorations. **Please bring your pruners.**

**Class dates:**  
Thursday, December 13 at 1:00 p.m.  
Sunday, December 16 at 1:00 p.m.

### Gift Certificates and other Goodies

Unsure about what the gardener in the family might be lusting after? A gift certificate could be just the thing. They can be purchased in any denomination or for a specific item. Alternatively, you can never go wrong with gloves and pruning tools or even a new trowel. Plants make great gifts too! **Gift wrapping available.**

### November in the Food Garden

Getting the veggie garden ready for winter entails just a few simple tasks. The first really hard frost of the season is upon us; we need to prepare now for cold weather that may lie ahead .

First of all, the **soil needs to be protected** from incessant rain, which leeches out nutrients and compacts the ground. All bare soil benefits from a 2-4" mulch of fluffy leaves, and if you have seaweed available, add it now as well.

**What not to put on your garden now? Compost!** Winter rains wash the nutrients away, and the microorganisms are sleeping anyway, so save your compost in the

**Fallen Tree Art Studio**  
(at Russell Nursery)

**Closed for the Season.**

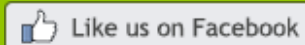
~ Abstract and  
mixed media images ~

Featuring work by:  
Michele Cullen Russell  
and Alison Sproule

\* \* \* \*

**Join our mailing list**  
**to receive timely**  
**updates and news on:**

- \*New arrivals
- \*Seasonal maintenance & pruning reminders
- \*Class information & schedules
- \*Notice of our fall sale



bin, and cover it with a loose blanket of plastic to keep it relatively dry and warm(ish). Be watchful though, last year I found suspicious little rat-sized tunnels in my protected compost.

**When to lime? Yesterday!** The recommended amount is *1 pound of Dolomite lime per square yard* simply measure one pound, and mark it on a container.

**Read On** for what to do with broccoli, kale and other crops... *By Faye Ford*

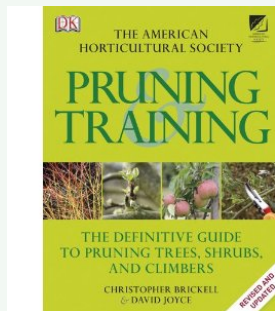


## What's in Your Greenhouse?

Don't leave your greenhouse empty all winter. Fill it with pots of spinach, chard, parsley and other hardy greens. The trick is to start winter crops outside in the summer and move them to the greenhouse when the tomatoes and summer crops are done. Be sure to do a good clean up after each season to get rid of any pathogens or bugs that might be lurking.

**Snow Warning:** Most hobby greenhouses are not engineered to carry a snow load, so it is wise to not let snow accumulate on the roof. It's a good idea to make a prop to have handy in case of snow. Measure and cut a 2 x 4 to fit under the ridge beam. If you are going to be away during winter, put the prop in place before you go.

**Early to Bed for my Bees this Year!** While it's still only November, I decided to put my Mason Bees to bed early. I hoped that maybe my precious pollinators would have fewer mites if I got them cleaned earlier in the season. Any time between October and January is prime time for cleaning cocoons, and I've usually done this task in January. **Read on** for info on how to wash and store mason bees. *By Faye*



## Good Reading

**Pruning and Training** by Christopher Brickell and David Joyce

This is one of the best pruning books around and after being out of print is now available. Novice and experienced gardeners alike find this to be an invaluable tool. Included is detailed information on how and when to prune pretty much everything you can think of. Highly recommended!

**Russell Nursery 1370 Wain Rd, North Saanich, BC V8L 5V1 250-656-0384**

[russellnursery@telus.net](mailto:russellnursery@telus.net) [russellnursery.com](http://russellnursery.com)